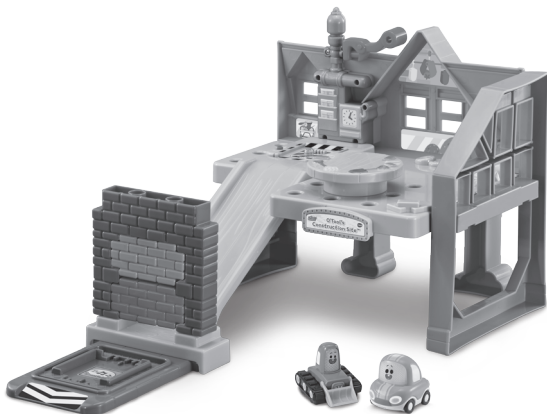


vtech®

Parent's Guide

GO! GO!
CORY
CARSON®

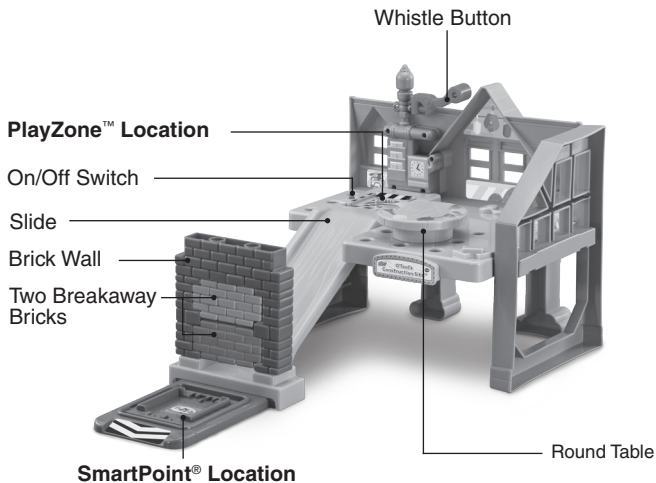
O'Tool's Construction Site™



91-003866-000 US

INTRODUCTION

Thank you for purchasing the **Go! Go! Cory Carson® O'Tool's Construction Site™**! Explore everything the O'Tool's construction site home has to offer with mini characters Cory Carson and Timmy O'Tool in this 360° playset. Knock down walls, sound the whistle and slide down the ramp for exciting role-play.



Mini Timmy



Mini Cory

INCLUDED IN THIS PACKAGE

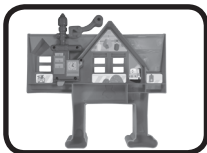
NOTE: This toy is not intended for teething.



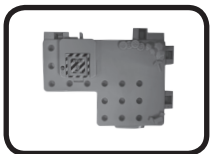
One mini Cory



One mini Timmy



One house front



One **PlayZone™** base



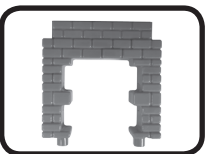
One left support



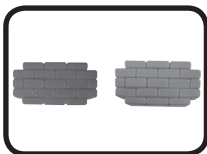
One right support



One slide



One brick wall



Two breakaway
bricks



One **SmartPoint®**
base



One round table



One label sheet

- One parent's guide

WARNING:

All packing materials such as tape, plastic sheets, packaging locks, removable tags, cable ties and packaging screws are not part of this toy, and should be discarded for your child's safety.

NOTE:

Please keep this parent's guide as it contains important information.

ATTENTION :

Pour la sécurité de votre enfant, débarrassez-vous de tous les produits d'emballage tels que rubans adhésifs, feuilles de plastique, attaches, étiquettes et vis d'emballage. Ils ne font pas partie du jouet.

NOTE :

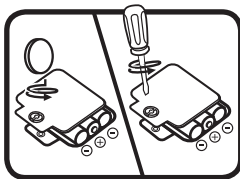
Il est conseillé de conserver ce guide des parents car il comporte des informations importantes. Adult assembly required.

GETTING STARTED

BATTERY REMOVAL AND INSTALLATION

Construction Site

1. Make sure the unit is turned **OFF**.
2. Locate the battery cover on the bottom of the **Construction Site**. Use a coin or a screwdriver to loosen the screw and open the battery cover.
3. Remove old batteries by pulling up on one end of each battery.
4. Install 3 new AAA (AM-4/LR03) batteries following the diagram inside the battery box. (The use of new alkaline batteries is recommended for maximum performance.)
5. Replace the battery cover and tighten the screw to secure.

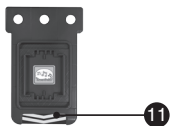
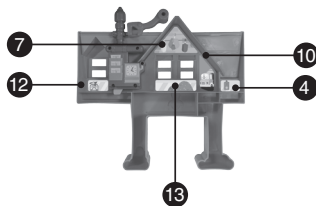
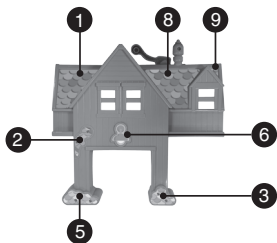
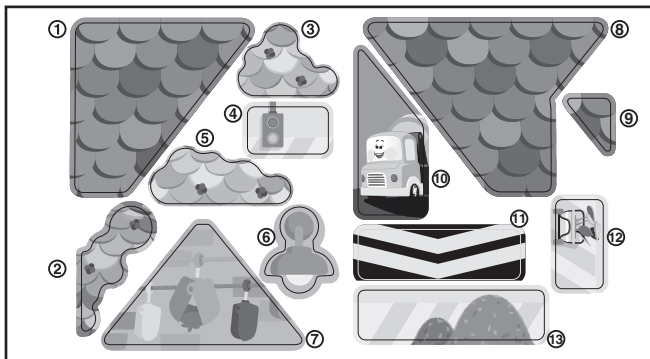


BATTERY NOTICE

- Use new alkaline batteries for maximum performance.
- Use only batteries of the same or equivalent type as recommended.
- Do not mix different types of batteries: alkaline, standard (carbon-zinc) or rechargeable, or new and used batteries.
- Do not use damaged batteries.
- Insert batteries with the correct polarity.
- Do not short-circuit the battery terminals.
- Remove exhausted batteries from the toy.
- Remove batteries during long periods of non-use.
- Do not dispose of batteries in fire.
- Do not charge non-rechargeable batteries.
- Remove rechargeable batteries from the toy before charging (if removable).
- Rechargeable batteries are only to be charged under adult supervision.

LABEL APPLICATION

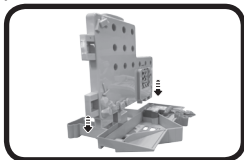
Please apply the labels to the playset as show below:



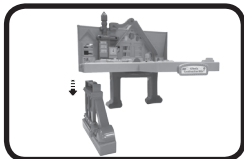
ASSEMBLY INSTRUCTIONS

With the **O'Tool Construction Site™**, safety comes first. To ensure your child's safety, adult assembly is required.

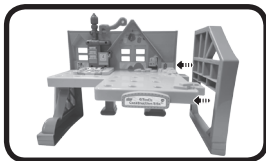
1. Lay the **House Front** face down on a flat surface. Insert the **PlayZone™ Base** tabs into the slots on the **House Front**. Press until you hear a "click" to indicate it is secure. Once connected, the parts cannot be removed.



2. Attach the **Left Support** to the **PlayZone™ Base**. Press until you hear a "click." Once the parts are connected they cannot be removed.



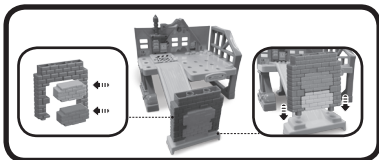
3. Insert the **Right Support** to the **PlayZone™ Base**. Press until you hear a "click." Once the parts are connected, they cannot be removed.



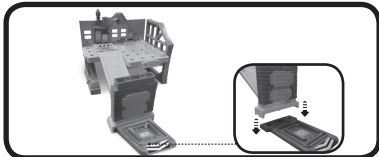
4. Attach the **Slide** to the **PlayZone™ Base**.



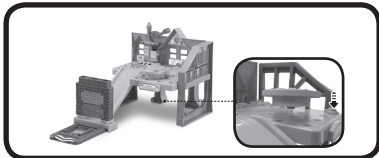
5. Insert the **Breakaway Bricks** into the **Brick Wall** and insert the **Brick Wall** into the base of the **Slide**.



6. Attach the **SmartPoint® Base** to the end of the **Slide** track.



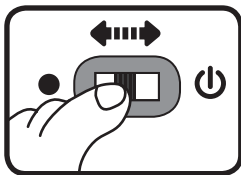
7. Insert the **Round Table** onto the **PlayZone™ Base**.



PRODUCT FEATURES

1. On/Off Switch

To turn the **O'Tool's Construction Site™ ON**, slide the **On/Off Switch** to the **ON** ⏻ position. To turn the **O'Tool's Construction Site™ OFF**, slide the **On/Off Switch** to the **OFF** ● position.



2. Automatic Shut-Off

To preserve battery life, the **O'Tool's Construction Site™** will automatically power down after approximately 60 seconds without input. The unit can be turned on again by pressing the **Whistle Button** or by placing **Mini Cory** or **Mini Timmy** on the **PlayZone™ Location**.

NOTE:

If the unit powers down while playing, please install a new set of batteries.

ACTIVITIES

1. PlayZone™ Location

Place **Mini Cory**, **Mini Timmy** or other **Go! Go! Cory Carson®** mini characters (sold separately) on the **PlayZone™ Location** to trigger sounds, short tunes and phrases. The light will flash with the sounds.



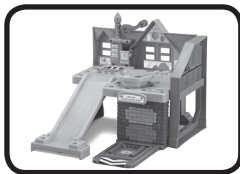
2. Whistle Button

Place a mini vehicle on the **PlayZone™** and press the **Whistle Button** to launch the mini vehicle down the slide and knock down the wall. When no mini vehicle is on the **PlayZone™**, press the **Whistle Button** to hear songs, melodies and phrases.



3. 360° of Play

Mix and match the **Slide**, **SmartPoint® Base**, **Round Table** and **Brick Wall** for multiple configurations or connect to other **Go! Go! Cory Carson®** playsets (each sold separately).



4. SmartPoint® Location

Place a **SmartPoint®** character (sold separately) on the **SmartPoint® Base** to hear fun phrases and sound effects.



SONG LYRICS

1. It's time to go to work,
It's time to smash the wall.
Digging, loading, moving dirt,
Let's swing that wrecking ball!
2. With a rumble and a roar we will make this place our own.
Let's build this site that we call home.

MELODY LIST

1. The Charleston
2. London Bridge
3. Did You Ever See A Lassie
4. Dizzy Fingers
5. Jack Be Nimble
6. It Ain't Gonna Rain No More

CARE & MAINTENANCE

1. Keep the unit clean by wiping it with a slightly damp cloth.
2. Keep the unit out of direct sunlight and away from any direct heat source.
3. Remove the batteries when the unit will not be in use for an extended period of time.
4. Do not drop the unit on hard surfaces and do not expose the unit to moisture or water.

TROUBLESHOOTING

If for some reason the unit stops working or malfunctions, please follow these steps:

1. Please turn the unit **OFF**.
2. Interrupt the power supply by removing the batteries.
3. Let the unit sit for a few minutes, then replace the batteries.
4. Turn the unit **ON**. The unit should now be ready to play again.
5. If the product still does not work, replace with an entire set of new batteries.

If the problem persists, please call our Consumer Services Department at 1-800-521-2010 in the U.S. or 1-877-352-8697 in Canada, or by going to our website at vtechkids.com and filling out our Contact Us form located under the Customer Support link. A service representative will be happy to help you.

IMPORTANT NOTE:

Creating and developing **VTech®** products is accompanied by a responsibility that we at **VTech®** take very seriously. We make every effort to ensure the accuracy of the information, which forms the value of our products. However, errors sometimes can occur. It is important for you to know that we stand behind our products and encourage you to call our Consumer Services Department at 1-800-521-2010 in the U.S. or 1-877-352-8697 in Canada, or by going to our website at vtechkids.com and filling out our Contact Us form located under the Customer Support link, with any problems and/or suggestions that you might have. A service representative will be happy to help you.

Supplier's Declaration of Conformity

47 CFR § 2.1077 Compliance Information

Trade Name: VTech®
Model: 5241
Product Name: Go! Go! Cory Carson®
O'Tool's Construction Site™
Responsible Party: VTech Electronics North America, LLC
Address: 1156 W. Shure Drive, Suite 200,
Arlington Heights, IL 60004
Website: vtechkids.com

THIS DEVICE COMPLIES WITH PART 15 OF THE FCC RULES. OPERATION IS SUBJECT TO THE FOLLOWING TWO CONDITIONS:
(1) THIS DEVICE MAY NOT CAUSE HARMFUL INTERFERENCE, AND
(2) THIS DEVICE MUST ACCEPT ANY INTERFERENCE RECEIVED, INCLUDING INTERFERENCE THAT MAY CAUSE UNDESIRABLE OPERATION.


CAN ICES-3 (B)/NMB-3(B)

Note:

This equipment has been tested and found to comply with the limits for a Class B digital device, pursuant to Part 15 of the FCC Rules. These limits are designed to provide reasonable protection against harmful interference in a residential installation. This equipment generates uses and can radiate radio frequency energy and, if not installed and used in accordance with the instructions, may cause harmful interference to radio communications. However, there is no guarantee that interference will not occur in a particular installation. If this equipment does cause harmful interference to radio or television reception, which can be determined by turning the equipment off and on, the user is encouraged to try to correct the interference by one or more of the following measures:

- Reorient or relocate the receiving antenna.
- Increase the separation between the equipment and receiver.
- Connect the equipment into an outlet on a circuit different from that to which the receiver is connected.
- Consult the dealer or an experienced radio/TV technician for help.

Caution: Changes or modifications not expressly approved by the party responsible for compliance could void the user's authority to operate the equipment.



**Visit our website for more
information about our products,
downloads, resources and more.**

vtechkids.com



Read our complete warranty policy online at
vtechkids.com/warranty



TM & © 2020 VTech Holdings Limited.
All rights reserved.
Printed in China.
91-003866-000 

